



BEMER 3000 :: Standing above the rest!
Industry Superiority

IT'S THE EFFECT THAT COUNTS.

BEMER[®]
3000

Our Competition

PAGE 03

Comparisons

PAGE 04

BEMER Patents

PAGE 07

Clinical Studies

PAGE 12

Our Business

PAGE 14

Our Product

PAGE 16

Letter From Our Leaders

PAGE 18

Our Competition: Why do others always compare themselves to BEMER?

Because we're simply the best!

Everyone knows that in today's world when someone wants to gather information on any subject they turn to the internet. This could be a good thing, but also a bad thing. The problem is that anyone can say anything about anybody. It would be wonderful if everyone who put information on the internet had integrity and only stated facts or clearly stated that it was only an opinion. However, due to greed many stoop to what is called "marketing manipulation". The goal of marketing is to capture the sale, but it is important that it is done with proven facts.

We at BEMER are aware that competitors have used this type of manipulation to influence public opinion.

- We have seen the competitors use our research to validate their products.
- We have heard the blatant lies used to slander BEMER.
- We know that many competitors will make illegal medical claims taken from other websites.
- We have seen claims stating "Don't buy a BEMER."

BEMER does not have to do this! BEMER stands above the rest and can prove it!

- BEMER has the scientific research to prove it is the most effective device available.
- BEMER even has the legal courts of Germany validating the effectiveness of our product.
- BEMER stands on proven facts.

Don't be a victim of advertising fraud. Don't believe everything you read or hear. Ask for proof. Demand the truth about the scientific research on their product.

We at BEMER are dedicated to the highest standards of products and education. We stand by our proven scientific research, our international patents, and above all our integrity; which has made us the leader in PEMF applications worldwide.





Comparing Apples and Oranges



Everyone claims to have the BEST. But how do you know which product is the BEST?

The answer is important since you want the product that offers the most benefit. Obviously it is the benefit that counts! BEMER has been clinically and scientifically proven to be at least twice as effective as any other PEMF (Pulsed Electro-Magnetic Field) device on the market. The signal, the crucial “active component” of PEMF is what makes the biggest difference. The BEMER signal can not be compared to other PEMF devices in the same way. Its like comparing an apple to an orange. They are completely different.

Certified as the BEST!

Like the FDA (Federal Drug Administration) in the United States, the German Regional Court in Berlin oversees businesses to ensure companies offer safe and reliable products. On Friday, January 30, 2009 the German Regional Court in Berlin, ruled for the first time in PEMF industry history approving more than 50 different advertising statements made by BEMER because they were proven to be based on indisputable, scientific facts, backed by results from multiple studies and thorough research. See page 6 to review the scientific results from the research of renowned scientist and author Dr. Rainer-Christian Klopp, MD comparing the BEMER to competitor models.

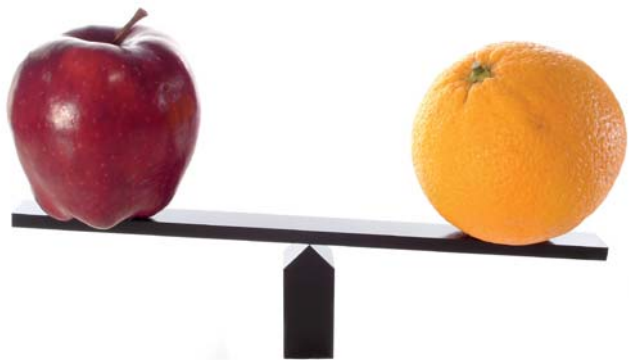
Key points approved by the German Regional Court - Legal No: 52O286107

- Scientific studies using BEMER show an improvement in microcirculation as the most significant success factor of PEMF application.
- The BEMER signal is the only impulse whose effect is scientifically proven to be beneficial. The most significant effects of the BEMER signal on the organism of humans and animals are:
 - Increased supply of oxygen and energy (ATP) through the improvement of microcirculation
 - Support of the body's own self-regulatory mechanisms through the activation of cellular and molecular processes.
 - Bolsters the immune system through improved adhesion behavior of white blood cells to protect the body from free radicals.

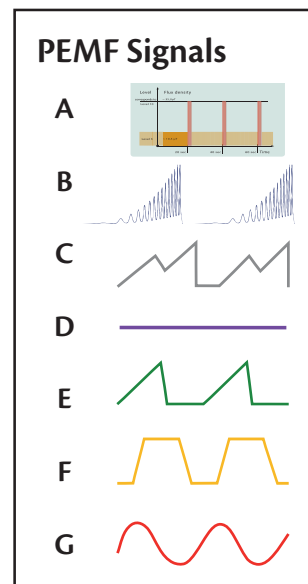
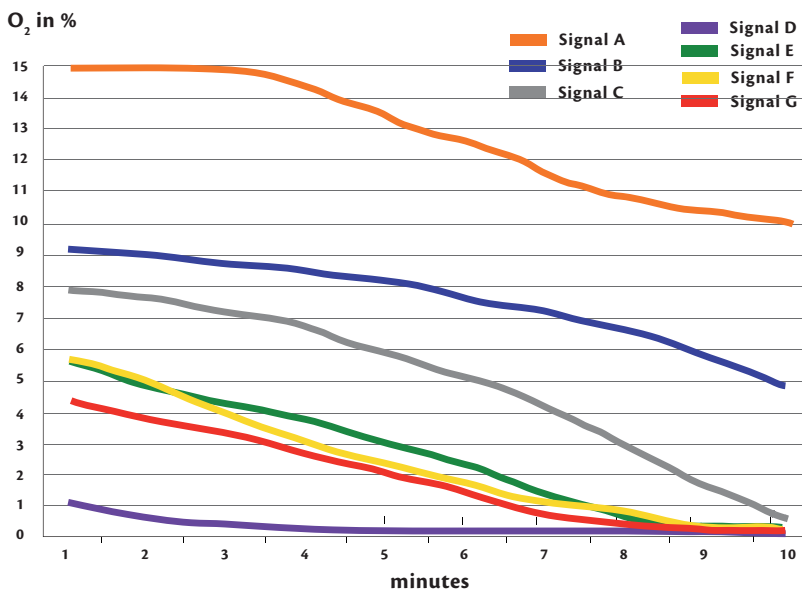
Comparative measurements: Better results...better product!

In the comparison chart below, Dr. Klopp does not directly name any products or manufacturers in his scientific studies, but rather refers to them as product A-F. It is not really necessary anyway, because he describes the signal types as permanent magnet, sinusoidal, trapezoidal, triangle, sawtooth and BEMER signal. In the following study and the corresponding table you can see the various signals used by PEMF device manufacturers.

Out of fairness to our competitors we would like to mention that even BEMER does not know exactly which of the competitors' systems are represented. There is, however, not a huge selection, since Dr. Klopp only compared the 6 best (as seen on page 6) from among 12 well-known suppliers worldwide. The mere fact that comparison studies were conducted as blind studies should clearly indicate the respectability of the research findings.



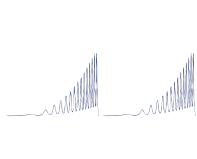

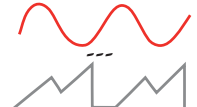







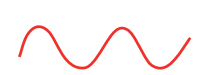

Exhaustion of oxygen supply in the venules ΔpO_2 (averages, in %)



Measuring intervals (in minutes) after a 6 minute application.

The test data for Product A shows a statistically significant difference compared to the data of all other products. (Please see further examples in Dr. Klopp's book, "Microcirculation").

BEMER competitors — comparison table with evaluation

Company Name	Product Name	Signal form	Intensity	Frequency	Patent	Signal design	Evaluation
BEMER 3000	BEMER 3000	Pulsating, broadband BEMER signal + vasomotion impulse	0 - max. 100 μ T	33 Hz	2		
Warnke Unit GmbH	Unittron	Pulsating signals from Sinus to max sawtooth signal	17 μ T	0.1 Hz - 855.9 MHz	0		
Magnovit Int.	QRS	Pulsating, sawtooth signal	40 μ T	1-200 Hz	1		
Vitalife Int.	MRS2000 + MED	Pulsating, sawtooth signal	0.1 μ T - 65 μ T	0.5 - 15 Hz	0		
Nikken	Magnetic jewelry and all kinds of products with magnets	Permanent Static electro-magnetic field	25.000 - 440.000 mT	n/a	0		
B3K	Curatron	Pure sinusoidal wave	7.0000-20.000 mT 10.000-70.000 mT 15.000-700.000 mT	1 - 50 Hz	0		

Leggend: mT= Milli Tesla Hz = Hertz μ T= Micro Tesla

Bio-feedback devices:

Bio-feedback devices can hardly be compared to the BEMER as they conduct an evaluation that takes a measurement (bio-feedback) to determine an appropriate PEMF utilizing a corresponding simple signal (i.e. sinus, sawtooth, or double sawtooth, for example) and frequency.

It is not necessary to conduct this measurement! The BEMER's patented signal addresses all the individual needs of the body in a low enough frequency to ensure there are no negative side-effects. Only the BEMER signal has achieved the most effective physiological benefits due to its patented characteristics and design.

BEMER Stands above the rest!

- The BEMER is certified for safety and efficiency in Europe.
- BEMER has a unique patented signal unsurpassed since 1998. Additionally, in 2007 BEMER released a BEMER Plus Signal that increases blood flow in microcirculation up to 24%.
- The BEMER has been the subject of many articles throughout the world in the last 3 years alone, including many health magazines, veterinary publications and sports & medical journals.
- The BEMER is used by world-class athletes, including numerous Olympic medalist and world champions.
- The BEMER has been on the market for over 10 years.
- Many PEMF websites only refer to the general PEMF application literature whose studies were done using other competitor devices; whereas BEMER has done studies comparing the BEMER Signal to our competition.
- BEMER has documented it's effects as they impact:
 - Microcirculation
 - Strengthening the immune system
 - Stabilizing the oxidative balance
 - Increasing ATP
 - And a lot more...

BEMER Patents: Explaining the physical differences

BEMER signal: European Patent (EP 0 995 463 A1)

The BEMER 3000 signal that was patented by Dr. Wolf A. Kafka in 1998 was quite a sensation in the PEMF market. Why?



Dr. Wolf A. Kafka, born November 20, 1939 in Wasserburg/Inn, Germany, earned degrees in physics (focusing on theoretical atomic and molecular physics and magnetism) and neurophysiology, doctorate awarded summa cum laude. He went on several extended research trips to the United States (US Dept. of Agriculture, Philadelphia office) before settling into a career with the Max Planck Institute for Behavioral Physiology. He spent more than 30 years at the Institute as a researcher and director, conducting research on molecular mechanisms. His work has been the basis for a large number of scientific developments and patents, publications in internationally recognized journals and documentaries. In 1998, he was named the President of the International Association for Research on the Physiological Effects of Electromagnetic Fields under Normal and Extreme (Space) Conditions, (EMPHYSPACE). He is the primary researcher, developer and patent holder for the BEMER 3000 electromagnetic field and the application concept.

The signal produces better results than other PEMF devices.

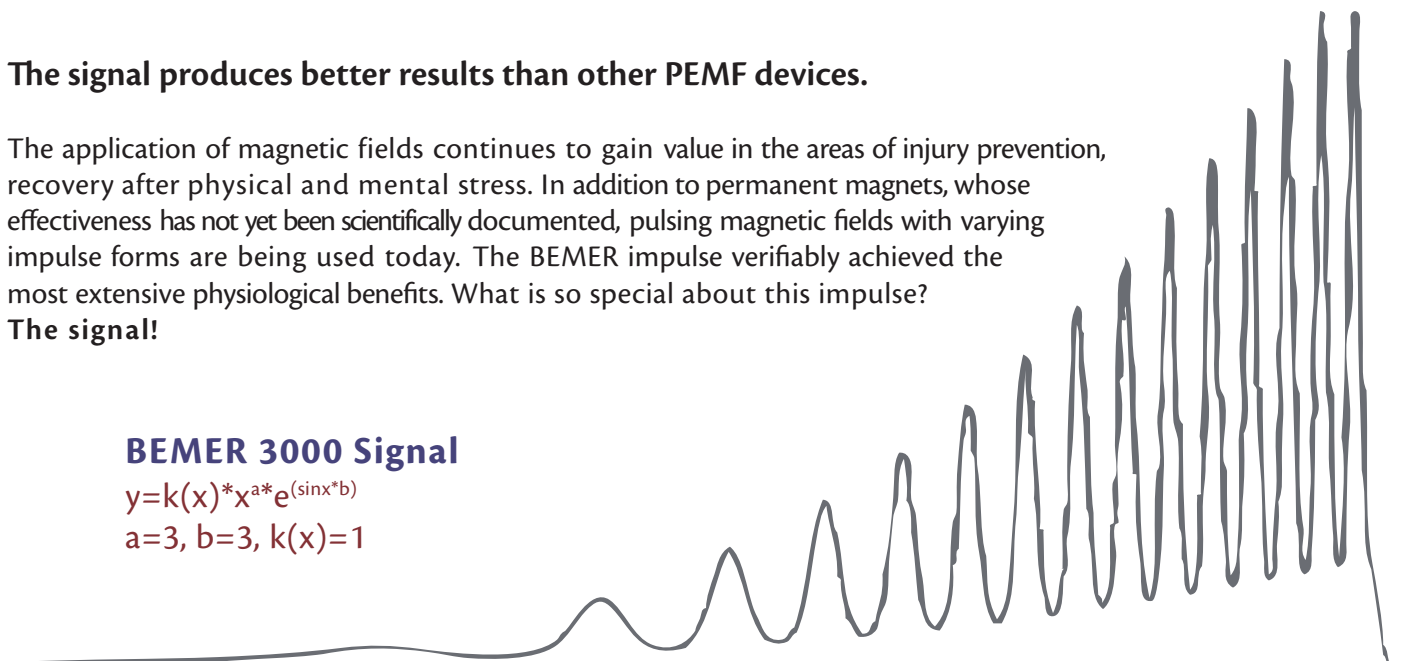
The application of magnetic fields continues to gain value in the areas of injury prevention, recovery after physical and mental stress. In addition to permanent magnets, whose effectiveness has not yet been scientifically documented, pulsing magnetic fields with varying impulse forms are being used today. The BEMER impulse verifiably achieved the most extensive physiological benefits. What is so special about this impulse?

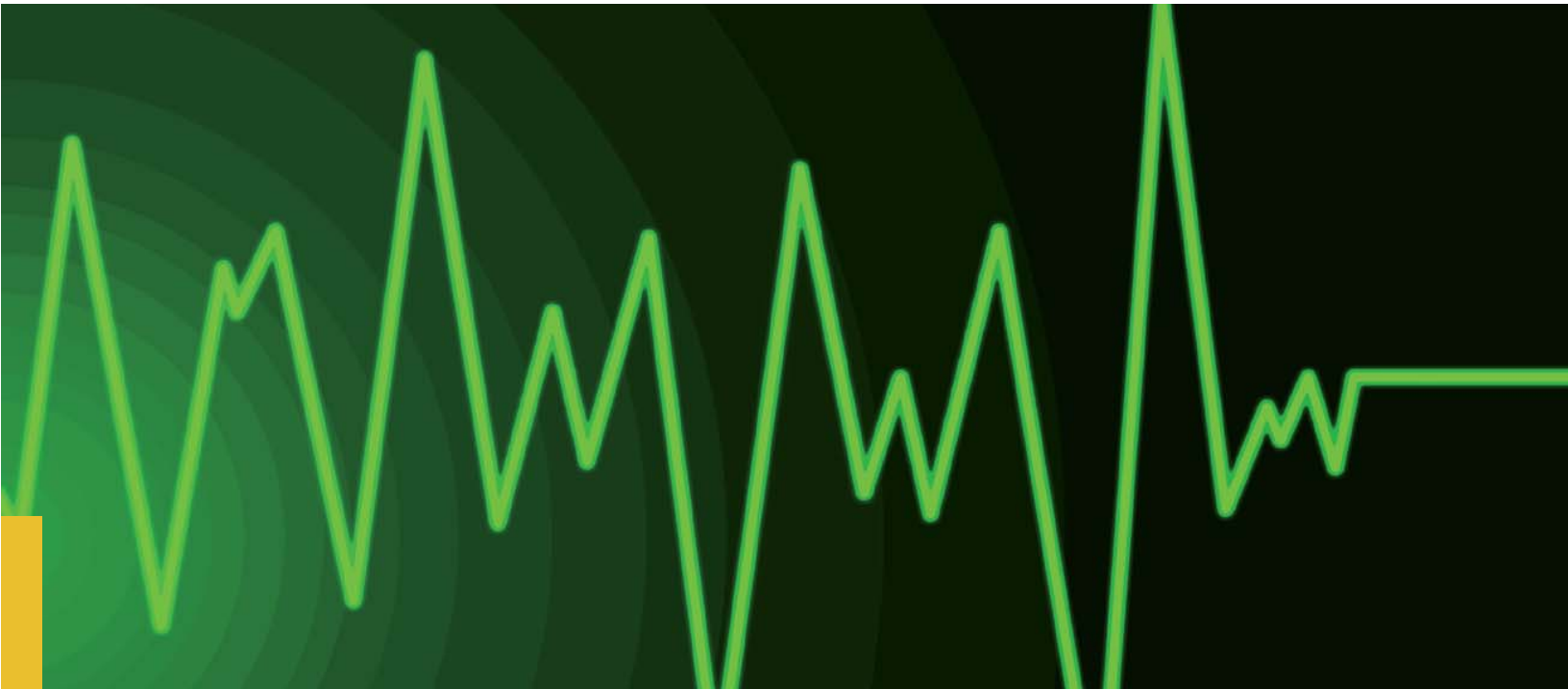
The signal!

BEMER 3000 Signal

$$y = k(x) \cdot x^a \cdot e^{(\sin x \cdot b)}$$

$$a = 3, b = 3, k(x) = 1$$





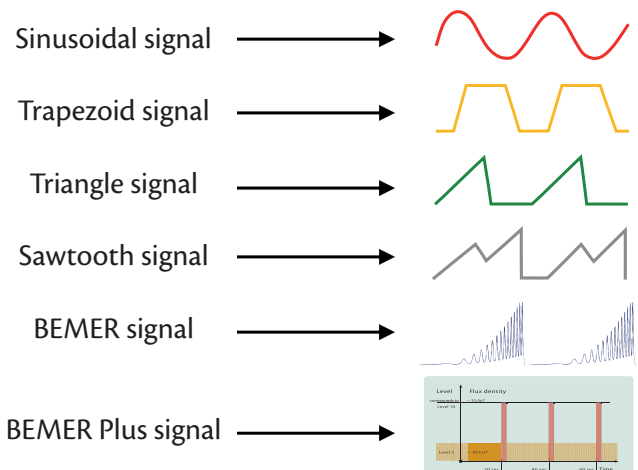
The signal (wave form):

The simplest wave form is a sinusoidal wave. By overlaying varied sinusoidal waves with different frequencies and different flux densities (amplitudes) other impulse forms are created. Exactly how these impulses are created is proprietary but the results are evident. The patent-protected BEMER impulse is one-of-a kind. It consists of a series of half-wave shaped, sine-like intensity variations. Beginning with very minute values, the intensity initially increases slowly, then drops down again to a value that is within an impulse, but higher than the initial value.

This sequence repeats whereby the changes in intensity grow closer together and the distance to the zero axis increases continually.

The ascent and descent patterns become steeper correspondingly. The impulse is therefore generated 33.3 times per second (33 Hz).

Shape of the Impulse



The pulse causes the effectiveness

Each pulse is characterized:

- By frequency [Hz]
- By intensity [T]
- Timely changes (Amplitude) in the signal

1 T (Tesla) = 10 000 G (Gauss)
 1mT (Millitesla)
 1 μT (Microtesla)

The BEMER geomagnetic field is approx. 50 μT
 (The low level of the BEMER geomagnetic field ensures there are no side-effects unlike other devices with higher intensities.)



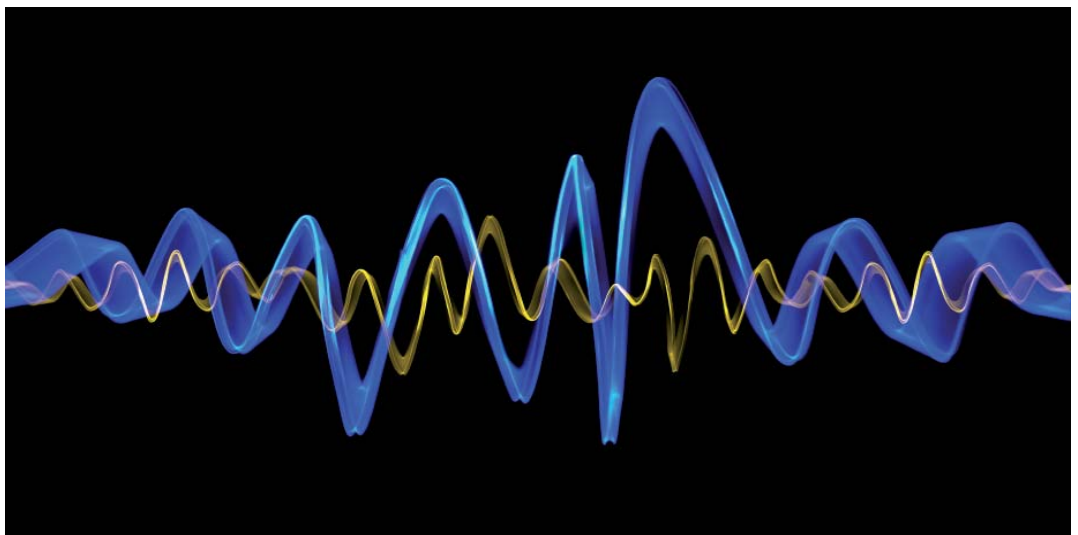
The frequency:

Frequency refers to the periodic waves (sine) it is explained as the number of complete periodic waves per second and the measurement unit is Hertz (Hz). With regard to the BEMER impulse, we can speak of frequencies only to a limited degree. The impulse is created by overlaying sine waves of varying individual frequencies. The BEMER impulse contains a uniquely broad frequency spectrum. Are the frequencies responsible for physiological changes? According to the latest research, the specific shape of the impulse is what produces higher, physiologically positive changes.

Time variations within each impulse are more descriptive. The BEMER signal is the most diverse and frequent signal of any PEMF product in the market. Our competitor's signals are traditionally in the trapezoid or sawtooth pattern. The BEMER signal is clearly superior due to the frequency and amplitude of the change in the signal.

Time variations:

The word "frequency" is automatically presumed to be a one second measure of time. As mentioned, the BEMER signal occurs 33 times per second (33 Hz), but the signal itself also has many variations in it. These variations can not be referred to as hertz (Hz) because they are occurring faster than a one second measure of time. Therefore, we refer to them simply as "time variations". These variations in the signal produce better results than our competitor's models. Their simple signals have infrequent and fewer time variations producing less effective results.



The Intensity

The intensity or force action of a magnetic field is referred to as flux density (electrical induction) and expressed in units of Tesla (T). Gauss (G) is an older measuring unit rarely used today.

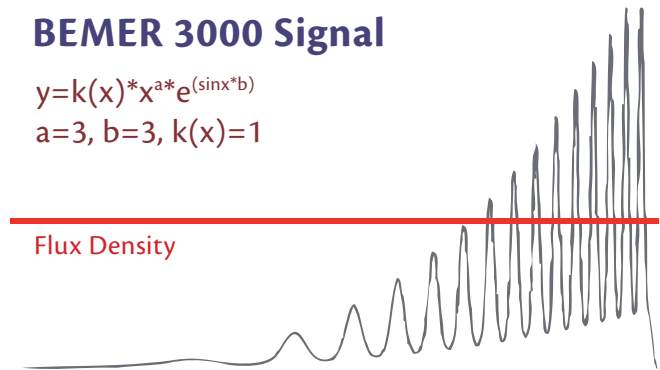
It is generally accepted that a magnetic field achieves its physiological benefits only within very specific flux densities. This range of flux densities is called the amplitude window. For sine and square waves the amplitude window covers the range of about 30 to 200 Milli Tesla (mT); very high intensity. For exponentially increasing wave forms the amplitude window is in the range of less than 100 Micro Tesla (μ T); low intensity. Similar to the intensity of the geomagnetic field. The effect of the impulse is dependent on the time variances and their amplitudes, as mentioned on the previous page.

Many competitor systems have an exponential increase in amplitude, but totally constant and without variation. If we consider the average flux density as the activator of the physiological effects, each of these impulses is at the exact average only once per impulse. If we consider the BEMER impulse in contrast to that, we can see that each half-wave shaped sine-like intensity variation contains the average flux density one time. In other words, the BEMER impulse moves more often and therefore longer in the range of the average flux density than any other impulse from any other competitor system (see illustrations).

Sawtooth Signal**BEMER 3000 Signal**

$$y = k(x) * x^a * e^{(\sin x * b)}$$

$$a = 3, b = 3, k(x) = 1$$



In the sawtooth signal the average flux density (red line) is reached only once per impulse.

In the BEMER signal the impulse moves in the range of the average flux density over a longer period of time. Whereas the average flux density, in the example above, is in the range of the average flux density 10 times.

The measurable difference:

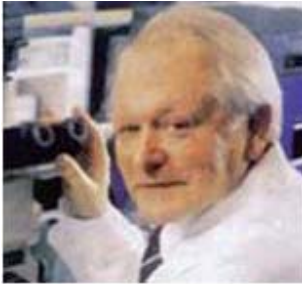
Due to the physical construction, the BEMER creates 40 triggers or stimulations per pulse with the pulse repeating 30 times per second (30hz). Therefore, the BEMER has 1200 stimulations per second whereas other devices (double saw tooth signal) have a maximum of 800 stimulations (or much less) per second. This is a significant difference!

To clarify, research shows that conventional devices operate with sinusoidal, trapezoid, sawtooth, or double sawtooth signals (See BEMER comparison on page 6). The BEMER devices contain all these signals. Based on physics principles, a single sinusoidal signal overlaid with other sinusoidal signals will become a trapezoid signal, a sawtooth or triple sawtooth signal, and ultimately a BEMER signal is created.

Any PEMF supplier who tries to go beyond a double saw tooth signal, with an exponential growth curve in an effort to surpass the BEMER signal, runs the risk of infringing on the BEMER patents!

BEMER 3000 signal: Worldwide Patent (DE 2006 041 365 A1 2008.03.13)

At the beginning of 2007 BEMER applied for a patent for the BEMER Plus, the signal created through the research and genius of Dr. Rainer Klopp, M.D., leader of the Institute for Microcirculation in Berlin, Germany and one of the most renowned microcirculation researchers worldwide. This discovery was a giant leap for the achievements in research and applications of PEMFs.

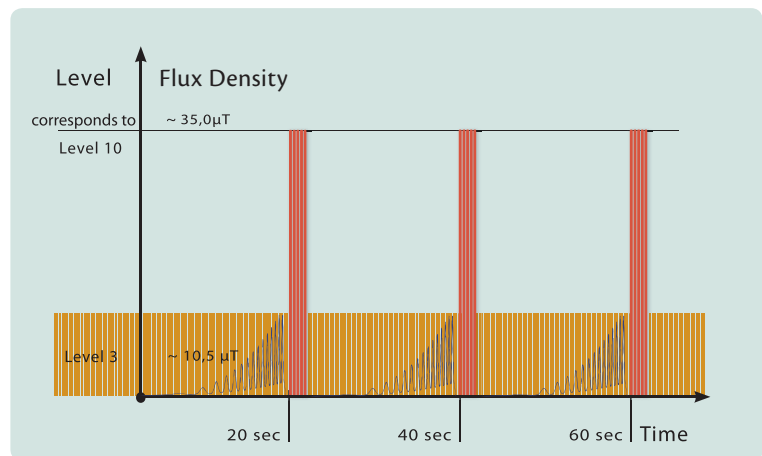


Dr. Rainer Klopp, M.D., born in 1943, studied at the Humboldt University of Berlin, as a medical specialist. After research work in physics and biophysics, he worked as the head physician at the Charité Institute in the area of clinical pathophysiology and later worked at the Institute for Cardiovascular Diagnostics.

In 1992, while at Charité Institute, Dr. Klopp founded the Independent Institute of Microcirculation in Berlin. It has cooperative relationships with several universities and research centers in Germany and abroad. To date Dr. Klopp has written more than 100 original scientific papers, contributions to medical journals, textbooks and several patents.

The BEMER 3000 Plus signal is superior to the original BEMER 3000 signal.

Every 20 seconds, five BEMER pulses are administered (see figure) with the maximum flux density of approx. 35 microtesla corresponding to level 10.



BEMER Plus signal: Impact on vasomotion

The rhythmic contraction of small arteries and arterioles called vasomotion plays an important role in the distribution of blood in the tissues. It is induced by the coordinated contraction of the individual smooth muscle cells of the vessel walls as a result of oscillating variances in the intra-cellular calcium ion concentration.

The BEMER Plus signal therefore focuses on two strategies: The first strategy is improving circulation via the activation of the “endothelium-controlled nitric oxide system” through an optimal amplitude window (optimal influx of calcium). The second strategy includes improving the circulation via the stimulation of vasomotion process through oscillating variances in the intra-cellular calcium ion concentration. The former, we achieve through the individual programs and the latter through the temporary increase in flux density (level 10 for 151 milliseconds) every 20 seconds (PLUS signal).

Clinical Studies: BEMER GCP confirmation

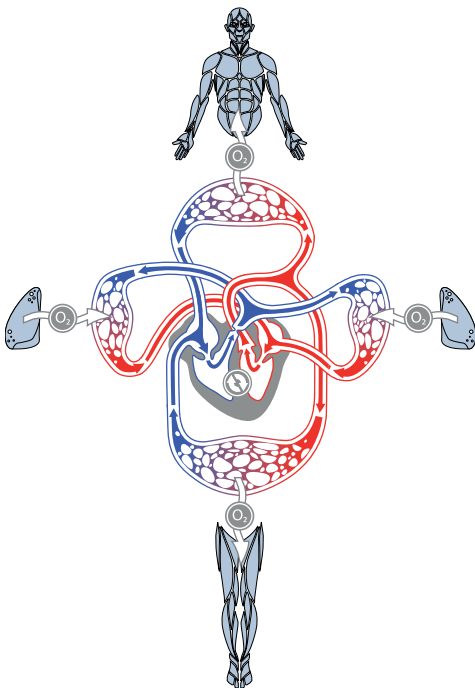
European BEMER clinical studies comply with the FDA study design rules or Good Clinical Practice (GCP) requirements. The BEMER 3000 is currently in the FDA approval process.

Photographic evidence provided by GCP confirms BEMER studies utilizing extremely complex and expensive high speed film technology called “intravital microscopy combined with laser flow technology”. This technique makes it possible to film images of your microcirculation – your “**Highway to Health**” non-invasively. The resulting images can not be applied to competitor system results.

The copyright for these images belong to the BEMER group and is currently unique. None of our competitors have this kind of clear, scientific proof of their results.



Graphic :: Equipment at the Microcirculation Institute



The impact on the microcirculation:

The most important aspect of our circulation, the microcirculation, is not only responsible for delivering important nutrients to our cells, but also for the removal of waste products produced through the metabolic processes.

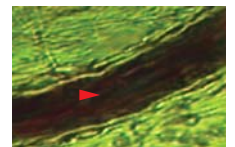
Any disturbance of microcirculation is "the basis of nearly all diseases" because of its foundational and critical functions in our body. On the other hand, a positive impact on microcirculation can be the foundation for maintaining or regaining our health.

The impact on the immune system:

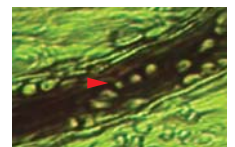
The immune system is a complex network in the body, which combats infection in the body. One component of this complicated defense mechanism is the white blood cells or leukocytes. They are present nearly everywhere in the body and are controlled by information proteins or other messenger substances. In case of infection, or other attacks on your health,

these messenger substances go to work to fight off infections. The BEMER electromagnetism helps the immune system through the increased formation of specific proteins and messenger substances resulting in improved defensive readiness.

10% increased roll action & adhesion of white blood cells (leucocytes)



Low number and adherence of white blood cells before BEMER 3000



Improved number and adherence of white blood cells after BEMER 3000 application

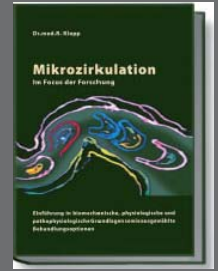
Clinical Study results

Institute of Microcirculation, Berlin, Germany
As referenced in the Book: Microcirculation

Microcirculation

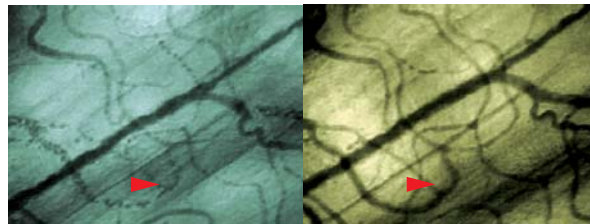
Focus of the research

Author: Dr. Rainer-Christian Klopp, M.D.



24% more capillary vessels perfused

Average of 24% improved blood flow in microcirculation increases oxygen utilization in your system by 15%, improves energy (ATP) production by 18% and increases vasomotion by 19%



Before BEMER 3000 application

After 2 minutes
BEMER application

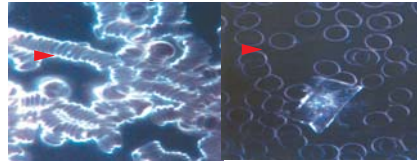
15% increased oxygen utilization



Before BEMER 3000
application

After 2 minutes
BEMER application

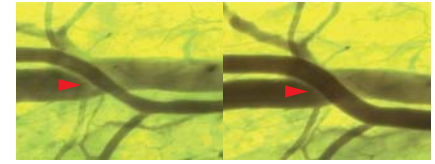
18% more energy (ATP) production



Before BEMER 3000
application

After 2 minutes
BEMER application

19% increased vasomotion



Weak vasomotion

Strong vasomotion

(For more detailed information on vasomotion see page 11.)

The impact on energy (ATP) production:

Adenosine-triphosphate (ATP) is the vital ENERGY molecule of all living systems. ATP is continuously recycled in organisms, with the human body turning over its own weight in ATP each day. A healthy adult produces approximately 165 pounds of ATP daily in the body and simultaneously uses it for energy.

Oxygen is the most important substance for our cells to produce energy (ATP). It is more efficiently transported throughout the body when red blood cells are free to carry more oxygen. Our sedentary society and other environmental issues cause our blood cells to stick together. BEMER separates them so they are able to carry more oxygen for higher energy production.

The impact on the effects of environmental influences:

Free radicals are aggressive oxygen compounds in the body that not only attack surrounding substances, but also play a significant role in the development of cancer, heart and circulatory disease, rheumatic, autoimmune, and several other diseases. Additionally, they influence the aging process.

The formation of free radicals as well as free radical binding substances happens naturally. However, this process can be negatively impacted by unfavorable and unbalanced environmental factors. This is where BEMER can help! It supports the body's natural creation of free radical binding substances by squelching oxidative damage while building up anti-oxidant protection.

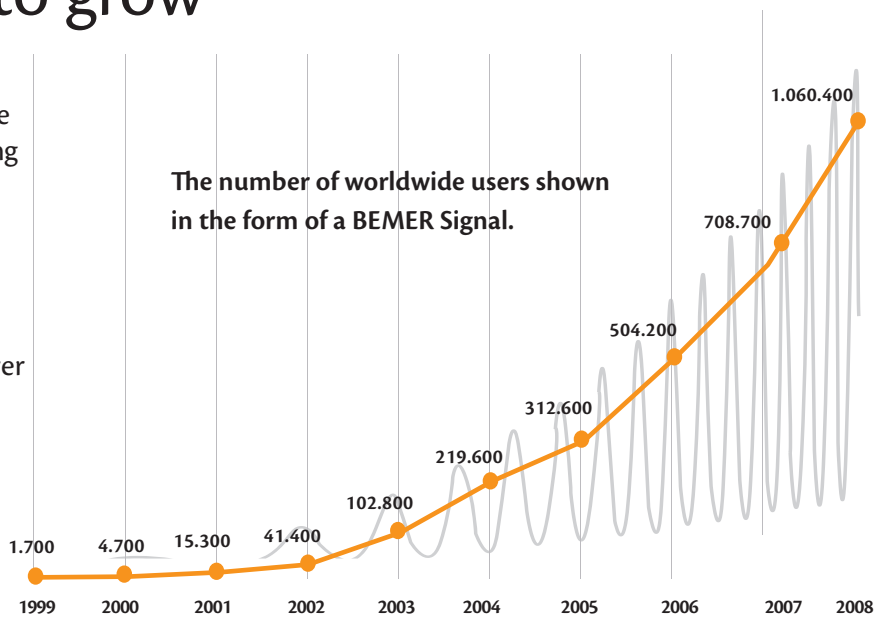


Our Business: BEMER continues to grow

The BEMER is clearly the superior PEMF device scientifically, and the BEMER business is gaining ground in the industry because of YOU!

Thank you!

- From 0 to 1,060,400 BEMER users in over 42 countries worldwide!
- Exponential growth in just 10 years!



BEMER 3000 simply the best!

BEMER has received many awards at the world's largest inventor exhibitions for the revolution and innovation it has achieved in the electromagnetic field with the innovative pulse used in the BEMER systems.

More than 10,000 partners



Awards at Inventor Exhibitions in Nuremburg, Geneva and Strasbourg to name a few.



More than 5000 medical professionals



BEMER - subject of many publications throughout the world

1000+ world class athletes



Hundreds of other exclusive partnerships.





Our Product: Why we do what we do!

For the past two decades, the medical profession has accepted the fact that poor health and a number of diseases are associated with disturbances in microcirculation and may even be caused or at least exacerbated by it. This does not only apply to the transportation of nutritive substances but also to the body's own defense mechanism. A disconnect occurs when the proper functioning of the microcirculation and the body's immune system fails to protect itself. Stimulating a compromised microcirculation will increase the functionality and adaptability of many organs, and support the body's own defense mechanisms. The BEMER 3000 can do the job!

Please feel free to visit www.bemeramerica.com to read the many testimonials from our valued customers detailing the results they have experienced with the BEMER.

BEMER 3000: The right device for improved health and vitality for humans and animals.

68

BEMER System

The best option for preventive healthcare, improved performance, overall wellness and vitality.



The BEMER system consists of a coil mat, a control unit, an intensive applicator and a carrying bag.

BEMER Complete System

Art. No.: 001212

BEMER VET Complete System

Art. No.: 001205



Optional Accessories

Battery Pack (Accu-Pak)

Art. No.: 001512



Coil Cushion

Art. No.: 001320



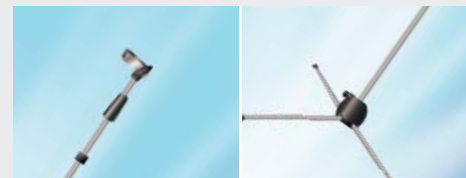
Acrylic board

Art. No.: 001319



Tripod stand for the acrylic board

Art. No.: 001326



To: Our Customers, Partners and Colleagues

This publication is a direct response to the false, misleading or uninformed information our competitors have chosen to distribute. We at BEMER have struggled to decide if a response was warranted. But in the end we agreed that because our customers unselfishly promote and defend our product, we too choose to respond with the hopes that this publication gives you the words and resources to continue to support BEMER and the success we know is not only possible, but inevitable.

It is important to us that you have all the information to make a good decision. We invite you to investigate the claims we and our competitors make and we are confident you will agree that BEMER is the most reliable and effective PEMF product on the market.

BEMER specifically claims only the following:

Among all PEMF manufacturers BEMER enhances and revitalizes the microcirculation – “the highway to health”

- More effectively
- More immediately
- With longer lasting results
- And no negative side effects

We invite you to visit us at www.bemeramerica.com to review the current research, news and special offers.

Enjoy your BEMER!!!

With kind regards,



Nik Gleim
President, BEMER USA, LLC
Vice President, Innomed International AG



Peter Gleim Jr.
Vice President, Innomed
International AG



Peter Gleim Sr.
President, Innomed International AG



Nik Gleim

Peter Gleim Jr.

Peter Gleim Sr.



BEMER 3000:

- .Different**
- .Reliable**
- .Better**

SOME OF OUR Worldwide AGENCIES.

EUROPE

Innomed International AG

(Manufacturing, worldwide distributor for Austria & Germany)
Schliessa 12,
9495 Triesen
Principality of Liechtenstein
Phone: +423 399 3999
Fax: +423 399 3998

BEMER Medizintechnik Anstalt

Schliessa 12,
9495 Triesen, Switzerland &
Principality of Liechtenstein
Phone: +423 399 3970
Fax: +423 399 3979

BEMER Nederland b.v.

Nijverheidsstraat 4
7041GE, 'sHeerenberg, Holland
P.O. Box 136,
7040 AC, 'sHeerenberg, Holland
Phone: +31 3 1466 8592
Fax: +31 31 466 8694

BEMER Techniques Médicales

Domaine de l'Arnaudel
11240 Escueillens, France
Phone: +33 4 68 740 732
Fax: +33 468 740 732

BEMER Medizintechnik Ungarn GmbH

Szilas park 6. fsz. 2.
1152 Budapest, Hungary
Phone: +36 1 415 0884
Fax: +36 1 415 0885

BEMER Technika, Medyczna Polska s.c.

Wielkopolska 280
81-531 Gdynia, Polska
Phone: +48 58 / 668 3475
Fax: +48 58 / 668 0909

BEMER Italia S.r.l.

Via Lunelli, 21
38100 Trento, Italy
Phone: +39 0461 831042
Fax: +39 0461 831025

TimeOut Studio / BEMER Sweden

Jungfruns gata 416-419
136 60 Haninge, Sweden
Phone: +46 8 556 531 00
Fax: +46 8 741 3316

A. Med. Health & Beauty Ltd.

St. Peter & Paul's Hospital
Alexandrou Papadiamanti & Aris-
tovoulou 8 3085 Limassol, Cyprus
Phone: +357 9960 8889 (Cyprus)
Phone: +306 979 100301 (Greece)
Fax: +357 2573 6593

IRELAND

Flat 6, Foxtan House
20 Broad Street, Leominster
GB, HR6 8BS Herefordshire,
Ireland
Phone: +44 1568 620 273

BEMER Medicintechnika

Zygio st. 91
08234 Vilnius / Lithuania
Phone: +3705 273 46 90
Fax: +3705 273 46 90

BEMER Medizintechnik CZ s.r.o.

Na Provaznici 14
15000 Praha 5, Czech Republic
Phone: +420 251 561 973
Fax: +420 251 561 995

BEMERLUX

16, Rue d'Alzingen
3397 Roeser, Luxembourg
Phone: +352 621 173 417
Fax: +352 367 962

BEMER-SUR S.L.

Avda. General López
Domínguez, 28, local C
29603 Marbella, Spain
Phone: +34 / 654 692 6 27
Fax: +34 / 952 778 824

OTHER AGENCIES IN

**Great Britain / India /
Iran / Lithuania / Mexico / Russia /
Slovenia / Turkey**

AMERICA

BEMER USA LLC

159 Lookout place, Suite 201
32751 Maitland, Florida, USA
Phone: +1 407 628 0511
Fax: +1 407 628 0503

AUSTRALIA

INNOMED BEMER Clinics Pty. Ltd.

Po Box 331, Newport NSW
2106 Sydney, Australia
Phone: +61 2 9973 1101
Fax: +61 2 8246 6355

AFRICA

Innomed Africa (Pty) Ltd.

10 Stuart Close
Somerset West Business Park
7130 Sommerset West, South Africa
Phone: +27 21 851 0560
Fax: +27 21 851 0564

Your BEMER representative:

